



 **ABARA  
FOUNTAIN**  
Designer and constructor of dynamic  
musical and interactive fountains



Headquarter: No.405, Salehi Building  
Science & Technology Park, Qazvin, Iran

Tel: +98 21 91 30 69 30

Tel: +98 28 33 69 69 34

[www.abaraco.ir](http://www.abaraco.ir)





### Why Abara?

---

#### Making dreams come true



Tell us your ideas and imaginations how far they seem. We are eager to cooperate in unique projects. Abara fountain team likes to make your dreams come true by spending time and energy on your ideas.

#### Research and development



We believe in research and development importance. We are always doing research to improve quality of our products and services to reach customer satisfaction.

#### Abara engineering



Abara accomplish a project from first concept to the final result. Initially concept design of projects will be done according to the space and fundamental ideas, and goes on by different parameters such as location, application, expenditure, time and etc.

#### Quality policy



Abara plays role of safe consultant beside employers evermore. We like to create perdurable beauty, so we consider the durability of projects as one of main parameters during designing projects.

### Our Services

---

Consultance, design and construction

- Dry deck fountain
- Musical fountain
- Decorative fountain
- Interactive fountain
- Kids waterplay area
- Interactive parks
- Renovation of old fountains

Maintenance fountains

Manufacturing and providing of modern fountains equipment





Moshir comercial complex roof garden dynamic fountain

## CONTENTS

Introduction .....	01
Why Abara .....	02
Services Of Abara .....	03
Fountain Types .....	04
Products .....	06
Outdoor Fountain .....	08
Indoor Fountain .....	43
Fountain Animation Design .....	54



### Introduction

Abara fountain company was founded in 2010 with purpose of designing and constructing modern fountains. Abara fountain is knowledge based company and abara headquarter is located in science and technology park of qazvin.

Abara fountain has designed and constructed over 100 different fountain around iran and middle east. Abara research and development unit has designed fountain equipment and is working on new special products.

Abara engineers have experience and motivation to design complex, modern, joyfull and preferable fountains. Abara fountain is pioneer in designing and constructing musical, dynamic, drydeck and interactive fountains. We believe that we are among the best.



## Types Of Fountain

- Musical Fountain
- Classic Fountain
- Dynamic Fountain
- Interactive Fountain
- Modern Water Parks
- Digital Water Curtain
- Prefabricated Fountain
- Glass WaterWall Fountain
- Modern Stone Water Wall
- Natural And artificial Waterfall
- Water Veils
- Reflecting Pool
- Fire And Water Fountain
- Water Blade Fountain
- Myler Lace Fountain
- Custom Design Fountain
- Fog Effect
- Rain Curtain
- Juming Jet Fountain
- Traditional Iranian Fountain
- Bubble Wall Fountain







## PRODUCTS

Abara fountain corporation is designer and manufacturer of fountain equipment. Utilizing high quality equipment is one of the fountains durability and consistency factors. Abara is provider of all equipment used in dry deck, classic, decorative and musical fountains.

Abara fountain provides fountain nozzles, pumps, controlling electric cabinets, fountain collectors, prefabricated fountain packages, water proof LED lights, controller and DMX reciever with high quality. Some of main equipment used in fountains are presented through next pages.

AIR Shooter Nozzle



Fountain Classic Nozzles



Fountain Solenoid Valve



Rotating Nozzle



Seagull swing nozzle



Accessories



Waterblade Nozzle



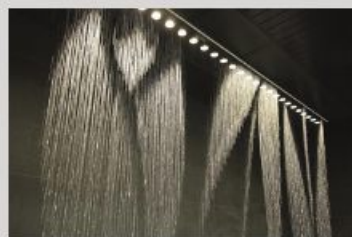
Watershow Studio



Robotic Nozzle



Digital Water Curtain



Water Proof LED Light



Myler Lace Nozzle



DMX Receiver



Crown Nozzle



Jumping Jet Nozzle



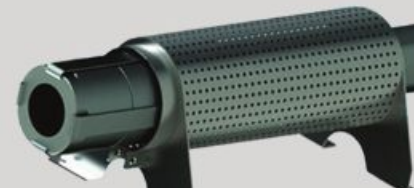
DryDeck Nozzle



Water Screen Nozzle



Pump



Fountain Main Control Unit



Bubble Wall





### Sulaymaniah musical dry deck fountain

Sulaymaniah musical dry deck fountain is constructed in august ,2019. This fountain is designed by Abara Fountain technical team in 2 months. All Mechanical and Electrical parts production had been done by Abara Fountain in one month parallel with detailed design of fountain. Abara Fountain technical team has installed and set up all mechanical and electrical fountain equipment.





Programmable by Watershow Studio Control Software

Controlled by DMX512 Protocol

10 DMX LED RGB Channels

24 AISI304 Fog Sprayer Nozzle

Chlorinator System

99 AISI 304L Dry Deck Nozzle

3 Sand Filter Package

Sulaymaniah musical dry fountain is suitable area for children and families entertainment as kids playground. This fountain has 99 number of Abara dry deck nozzle which all parts of them are made of AISI304L. Each Abara dry deck nozzles has one comet nozzle, one stainless steel 304 solenoid valve, one 9w IP68 LED RGB light, stainless steel 304 plate and fixture mechanism to install nozzle on floor and lock it. Furthermore 24 number of nozzles have fog sprayer nozzle as well





The main feature of Abara dry deck fountain is getting together all necessary and essential parts for dry deck fountain in a product.



Performance stability



Safe Design



Solenoid Valve



Wind resistant



Fixture

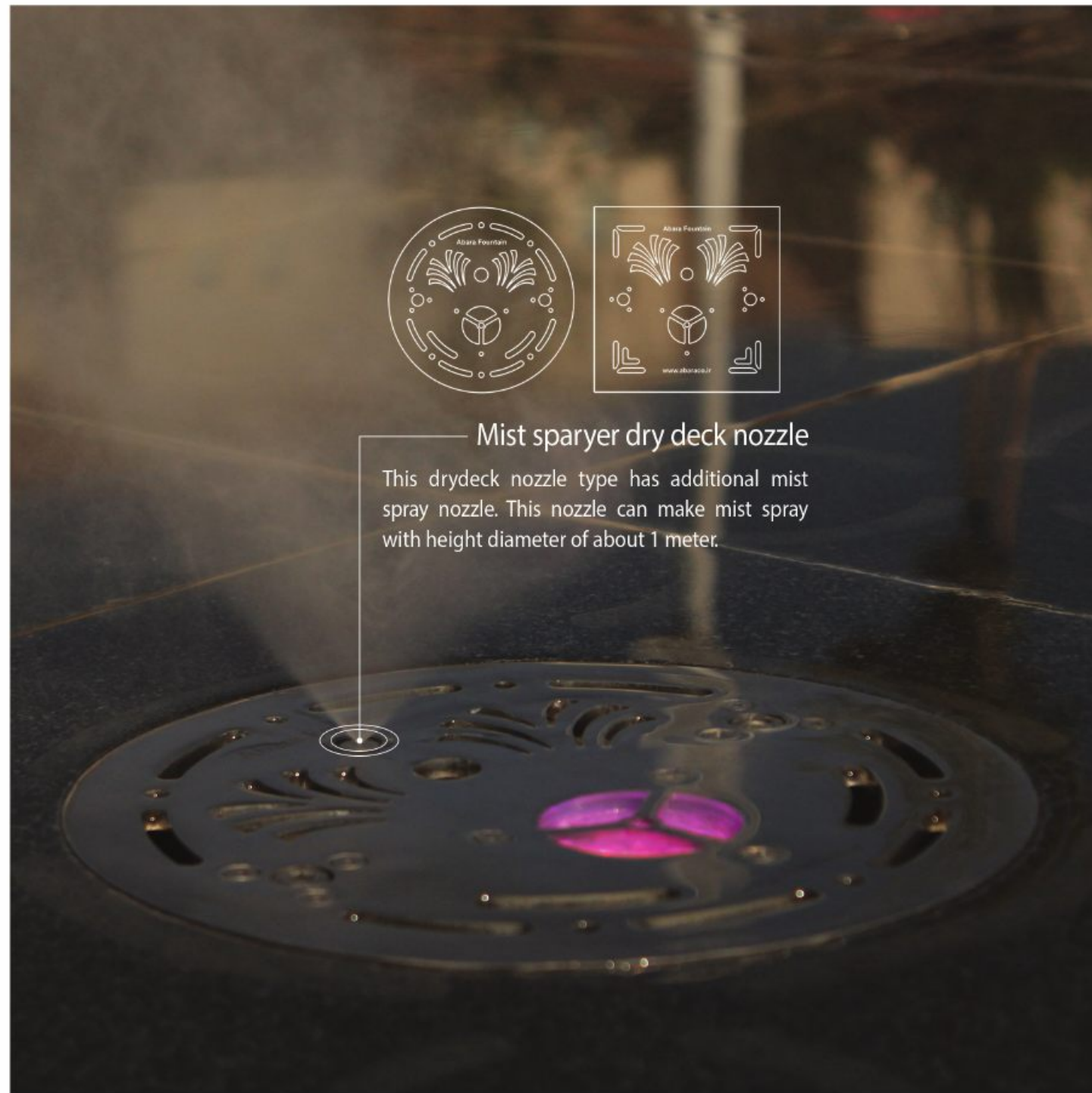


IP68



## Mist sparyer dry deck nozzle

This drydeck nozzle type has additional mist spray nozzle. This nozzle can make mist spray with height diameter of about 1 meter.





### Fadak park floating dynamic fountain

This fountain is installed floating on an artificial lake and by changing of lake water depth, fountain moves up and down. This fountain includes central jet nozzle with 15m height and comet ring with 40m diamter. Floating fountain is controlled by DMX512 system with 2 led rgb light channel and AC drives.



Prefabricated package



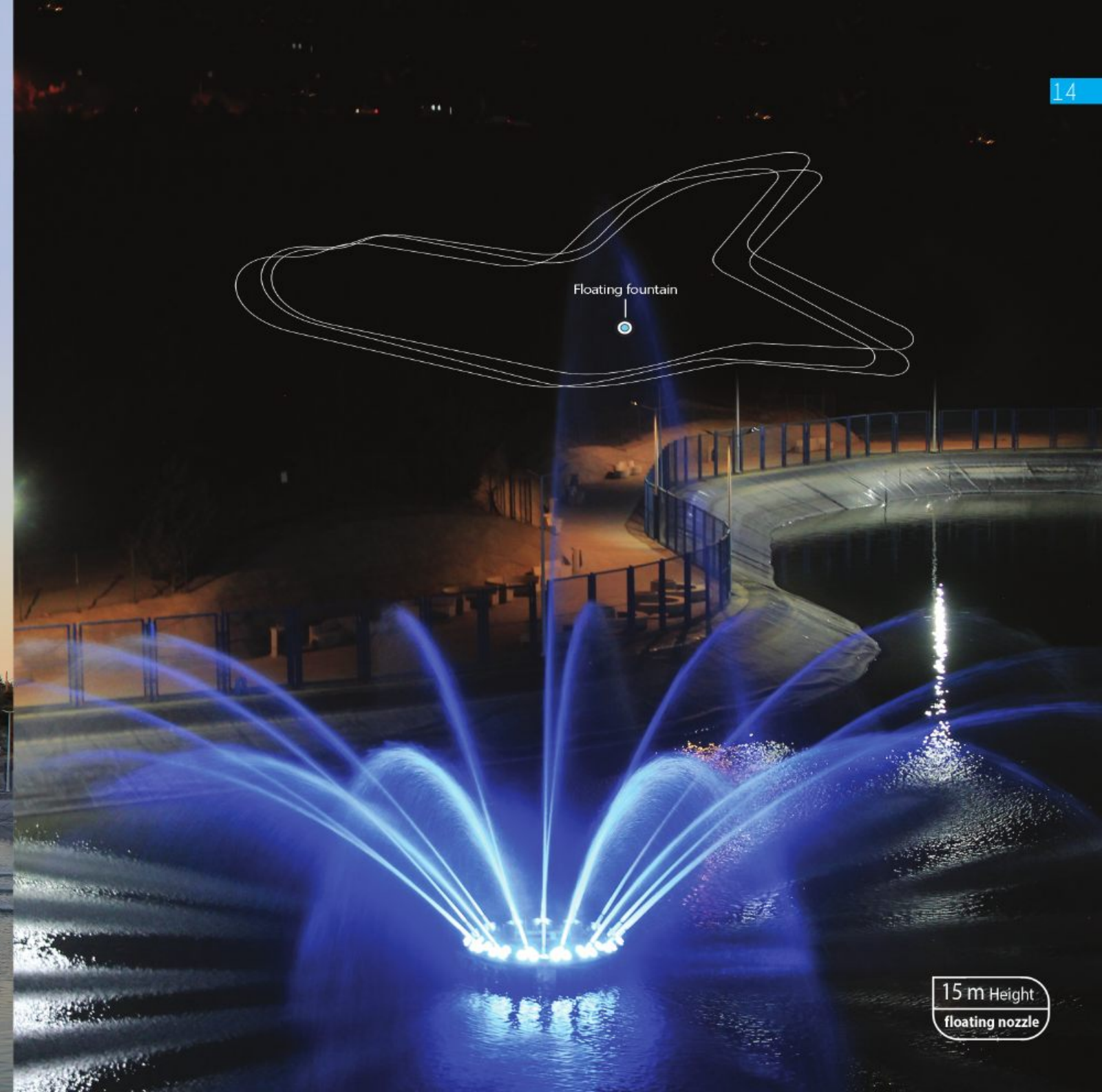
DMX



Comet nozzle



Floating nozzle



15 m Height  
floating nozzle





### Moshir comercial complex roof garden dynamic fountain

Moshir commercial complex roof garden is designed by using beautiful and unique elements of shiraz historical city with concept of iranain and islamic architecture. Dynamic fountain in that space, is constructed by using foam effect nozzle, crown nozzle, cluster nozzle and comet nozzle. This fountain is controlled by DMX 512 system and plays different shows and lightings.



Cluster nozzle



Comet nozzle



Foam nozzle



Crown nozzle





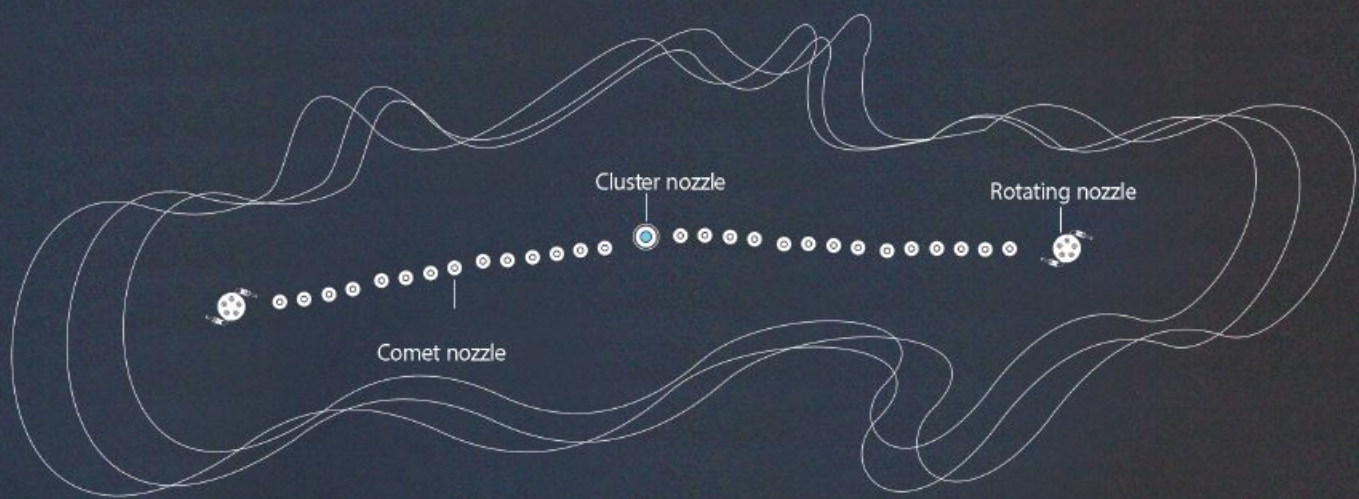


Moshir comercial complex roof garden rythmic fountain

This project consists of two fountains in different places of hotel. Place hotel is located on best place in kish island in persian gulf. This hotel is 5 star and fountains is constructed by best quality materials and equipment. Dry fountain includes 24 stainless steel dry deck nozzle with solenoid valve. Classic fountain of hotel includes stainless steel cascades and waterfall with warm white led lights







### Tehran Abshar park Musical fountain

Abshar musical fountain was constructed on 2014 and needed renovation. Abara fountain repaired and renovated DMX pumps and lights and control system of this fountain on 2020.



DMX



Comet nozzle



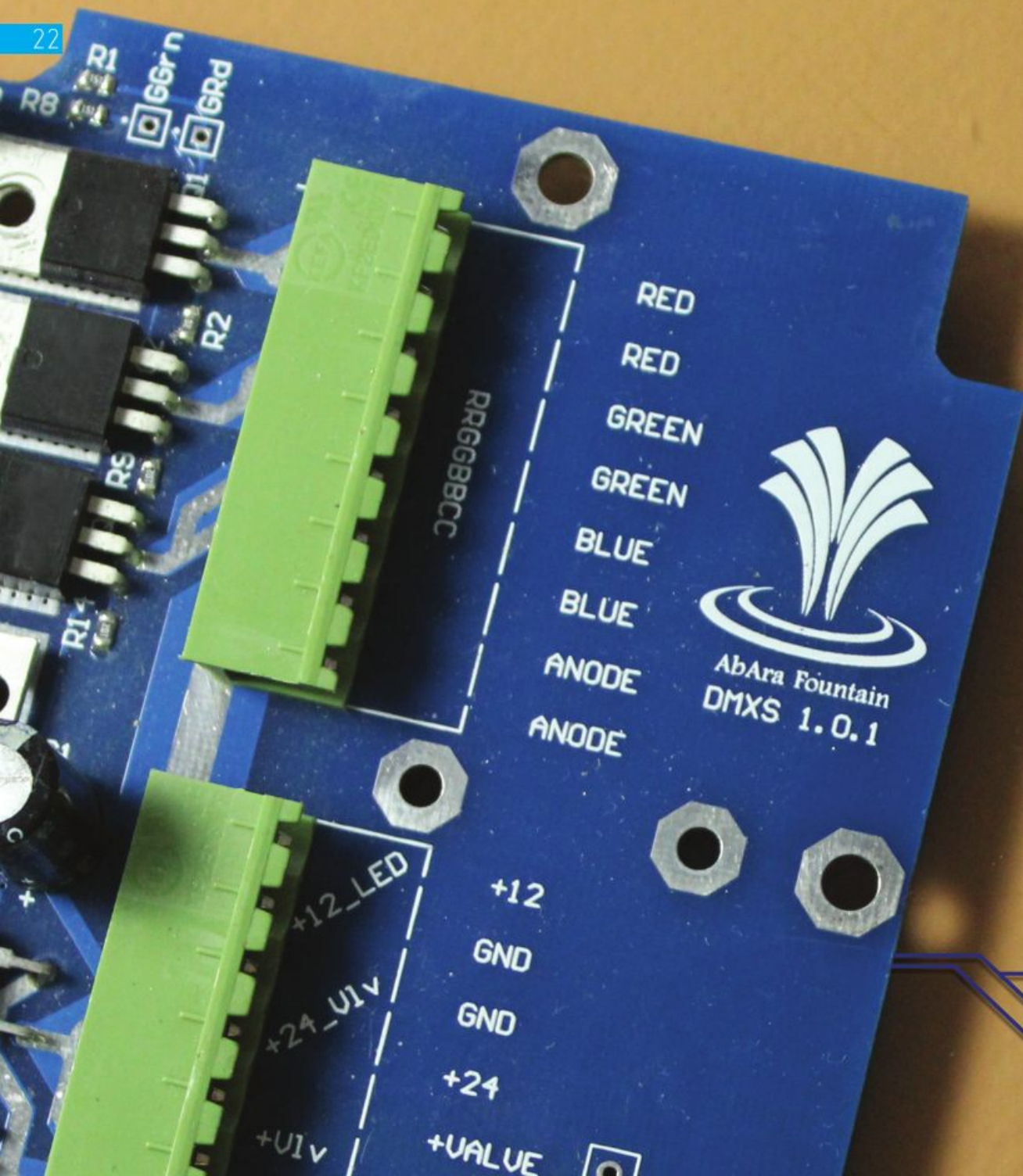
Rotating nozzle



Cluster nozzle







## DMX PROTOCOL

Abara fountain has been designed and implemented fountain electronic system based on DMX protocol. DMX protocol as an efficient protocol in fountain industry, is selected protocol in entertainment and lighting industries. Nowadays all modern fountain equipments are controlled by DMX protocol. Abara DMX controlled system consists of items below:

- Watershow Studio Software
- Fountain Main Control Unit
- DMX Receiver-rail mount

Watershow  
Studio

Abara watershow studio software is a virtual studio for designing fountain shows. This software is a powerful environment for modeling, designing and making.



Core 2 duo cpu



windows 7,8,10



1 GB Ram



200 MB Free Space

Abara DMX multifunction receiver is a comprehensive controller for DMX based fountain equipments. Using this receiver you can add DMX controlling ability to simple fountain equipments. This edition of receiver, can drive a solenoid valve and RGB LED light. This product is placed in a waterproof case and can be used underwater.



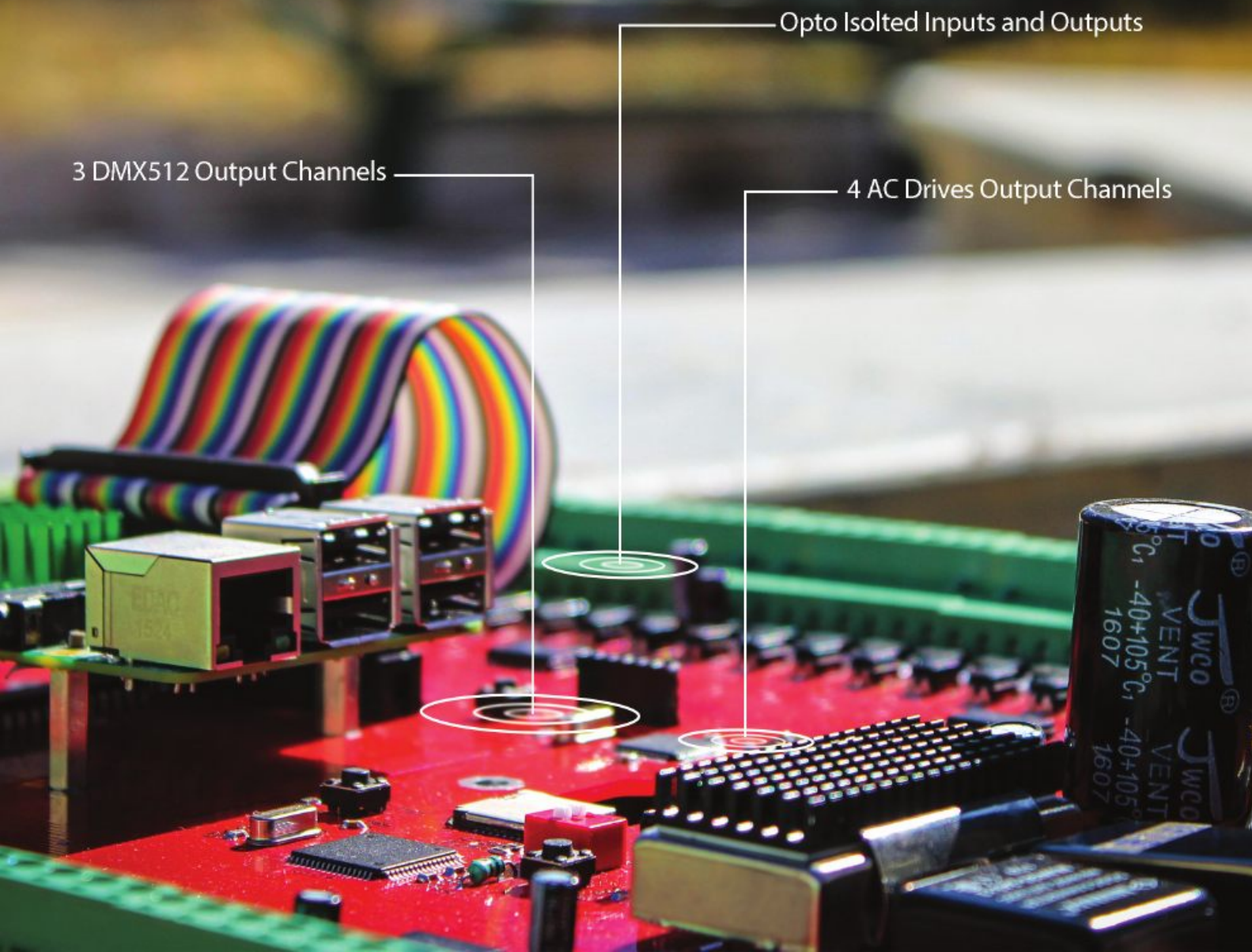
## Fountain Main Control Unit

This controller, is a smart controller for fountain based on DMX protocol. This product is in worldwide technology grade. Using FMCU, you can see all current processes of fountain and following environment parameters and controlling fountain based of them.

3 DMX512 Output Channels

Opto Isolted Inputs and Outputs

4 AC Drives Output Channels







Neishabour Laminar jet tunnel fountain

This fountain includes 10 numbers of 16mm stainless steel laminar jet. Laminar fountain works with 2m heights and 3m length. Walking under laminar fountains and crossing this tunnel is so joyful for children and also adults.



Changable angle



Cutting mechanism



### JUMPING JET NOZZLE

One of the most beautiful cutting and shooting water mechanism. Can make a apperance of this nozzle. comercial complex and



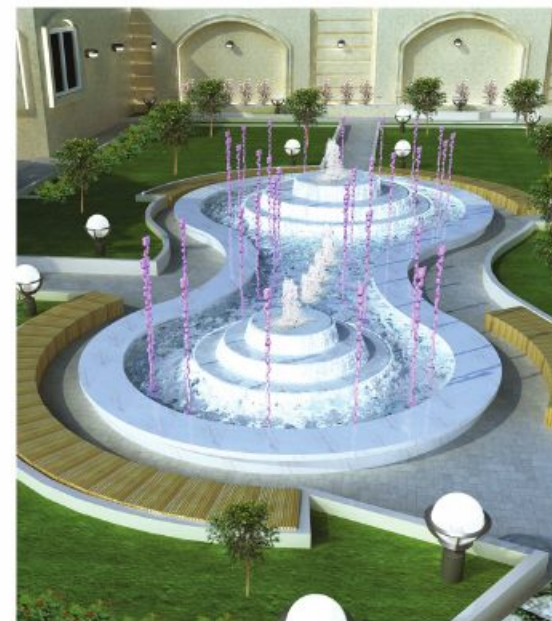
effects of jumping jet nozzle is rods in air. Abara exclusive cutting faboulous views. Amazing laminar Make it as right choice for lobbies, amusement areas.





## Residential Villa Dynamic Fountain

This fountain is consisted of foam and comet nozzles on different levels. This Fountain Controlling system is based on PLC, which fountain lights and height are controlled.





### Isfahan fair seagull fountain

This dynamic fountain is installed in new isfahan fair area. This fountain package include 6 LED RGB light, nozzle and moving mechanism. In this project, fountain consist of in centrifugal pump, AC drive and Sand filter package



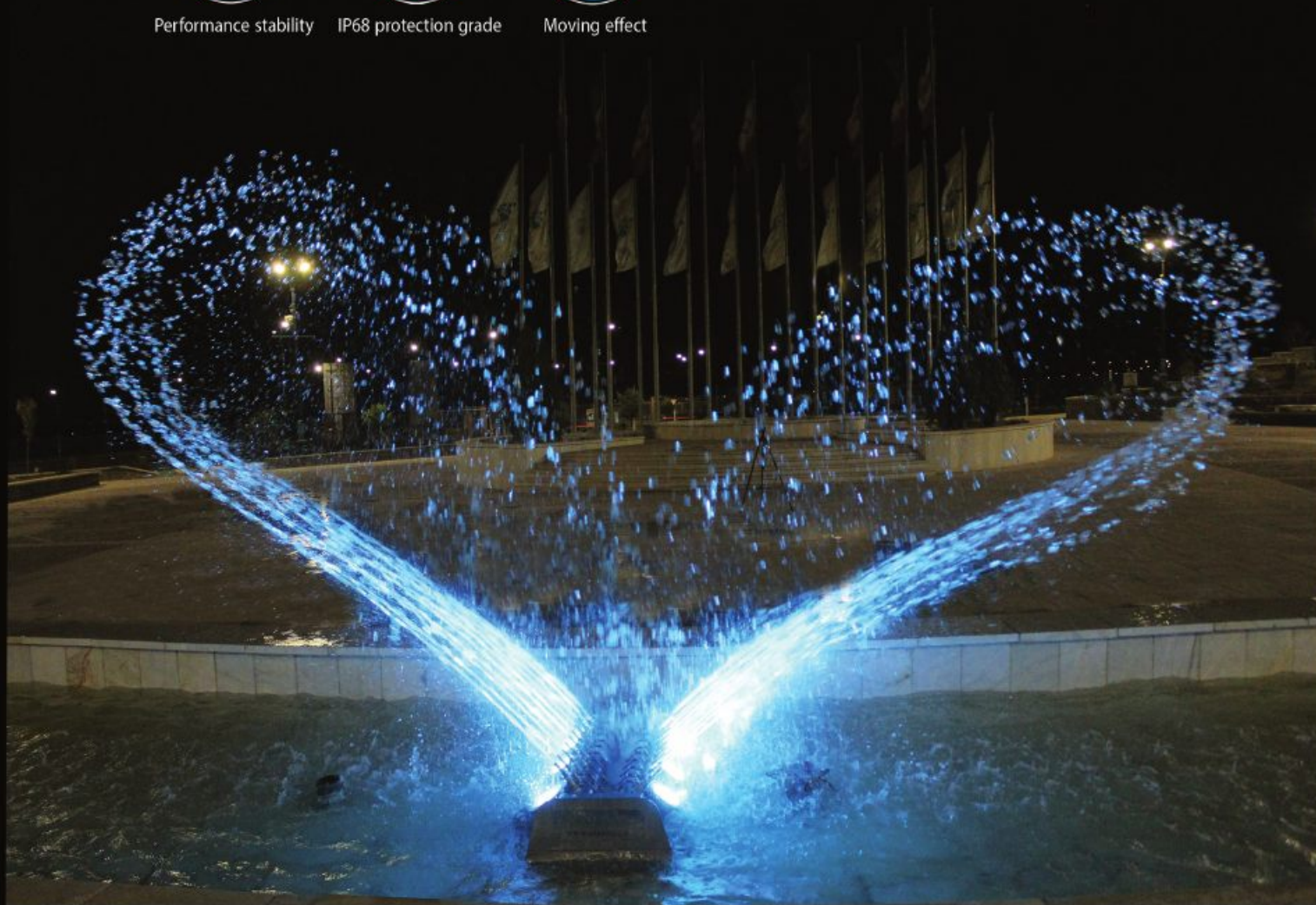
Performance stability



IP68 protection grade



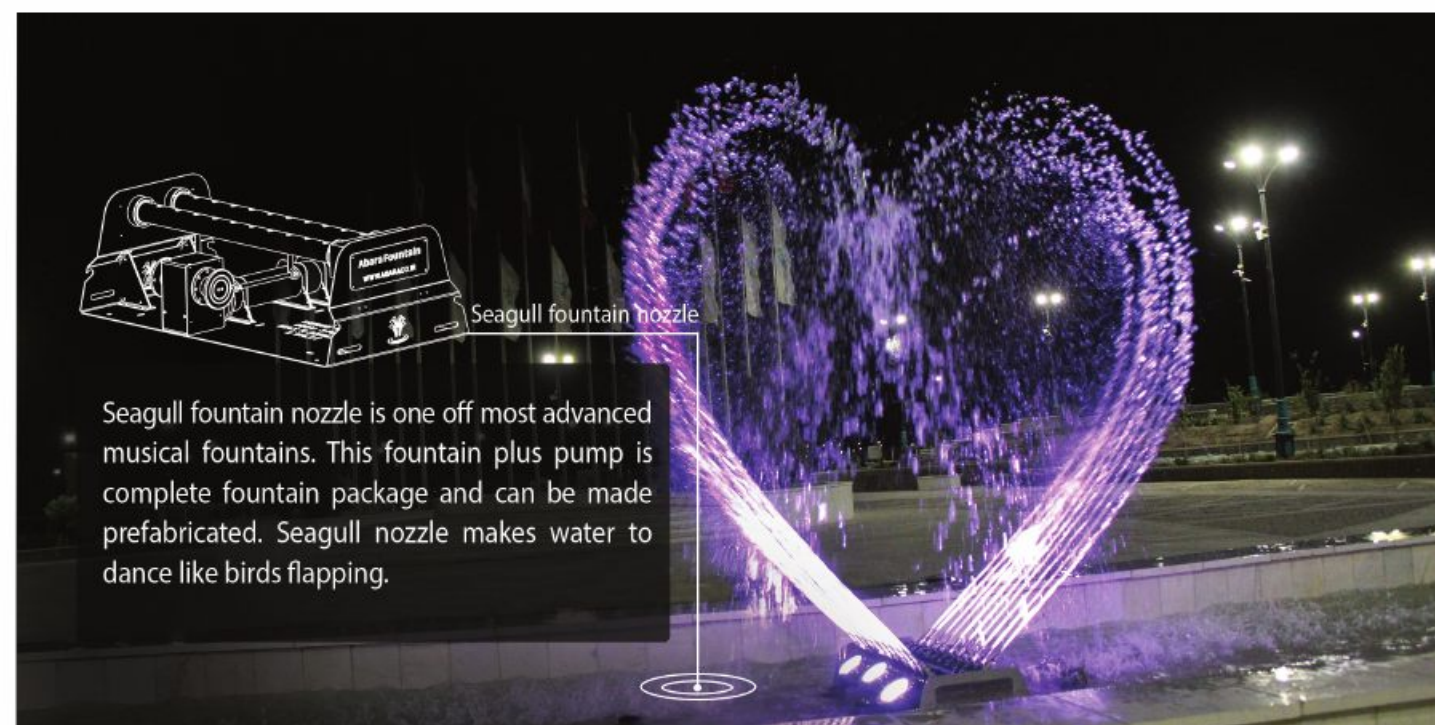
Moving effect



### SEAGULL NOZZLE



3 m Height  
Seagull nozzle



Seagull fountain nozzle

Seagull fountain nozzle is one off most advanced musical fountains. This fountain plus pump is complete fountain package and can be made prefabricated. Seagull nozzle makes water to dance like birds flapping.



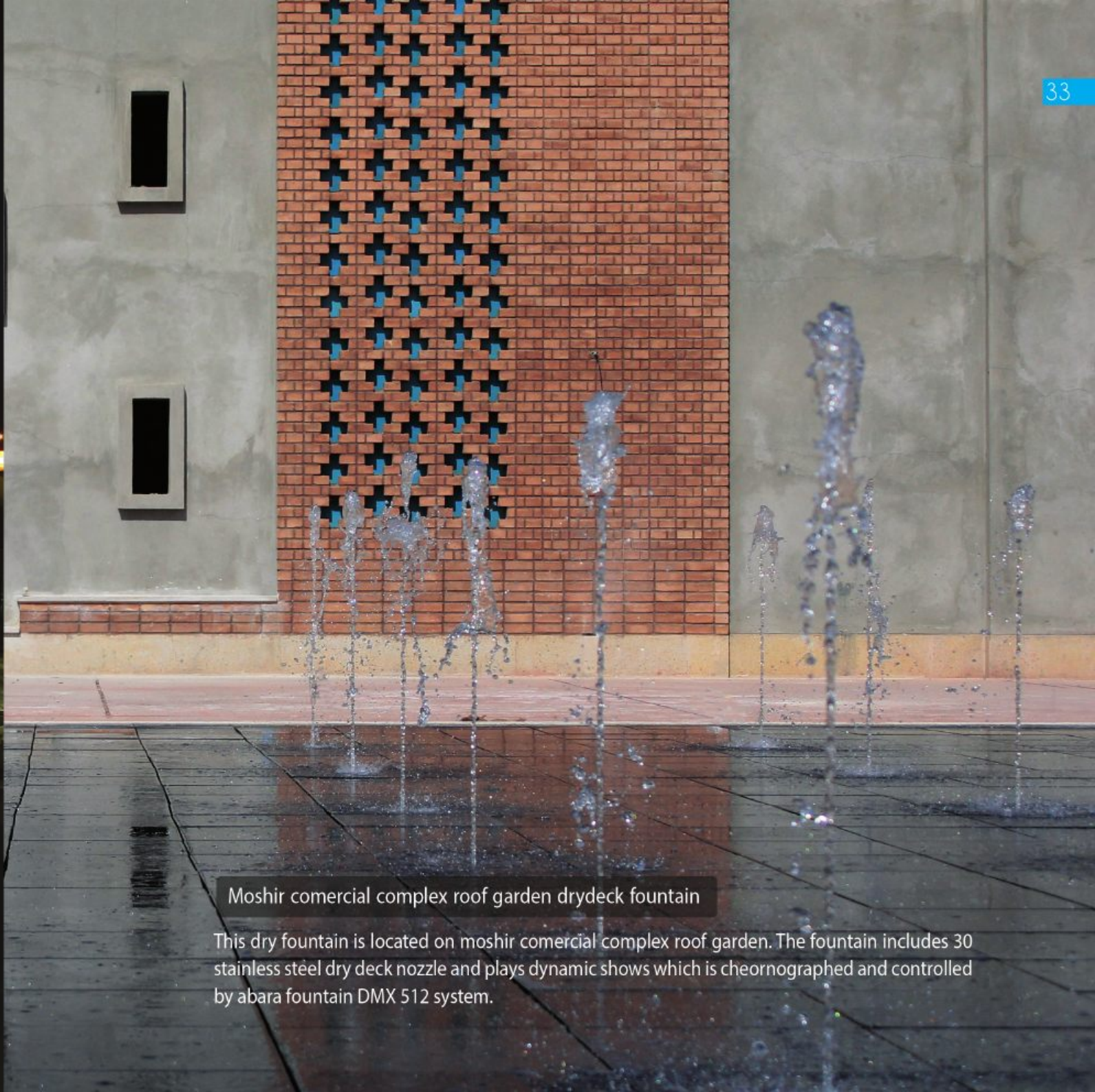
### Talare Shahr Musical Dry Deck Fountain

This fountain has 51 dry deck nozzles which can be controlled by solenoid valves. Four line centrifugal pumps are controlled to change fountain height. By using DMX system a combination of rainbow colors for fountain lights would be available.



### Moshir comercial complex roof garden drydeck fountain

This dry fountain is located on moshir comercial complex roof garden. The fountain includes 30 stainless steel dry deck nozzle and plays dynamic shows which is cheornographed and controlled by abara fountain DMX 512 system.







#### Negin Restaurant Dry Deck Fountain

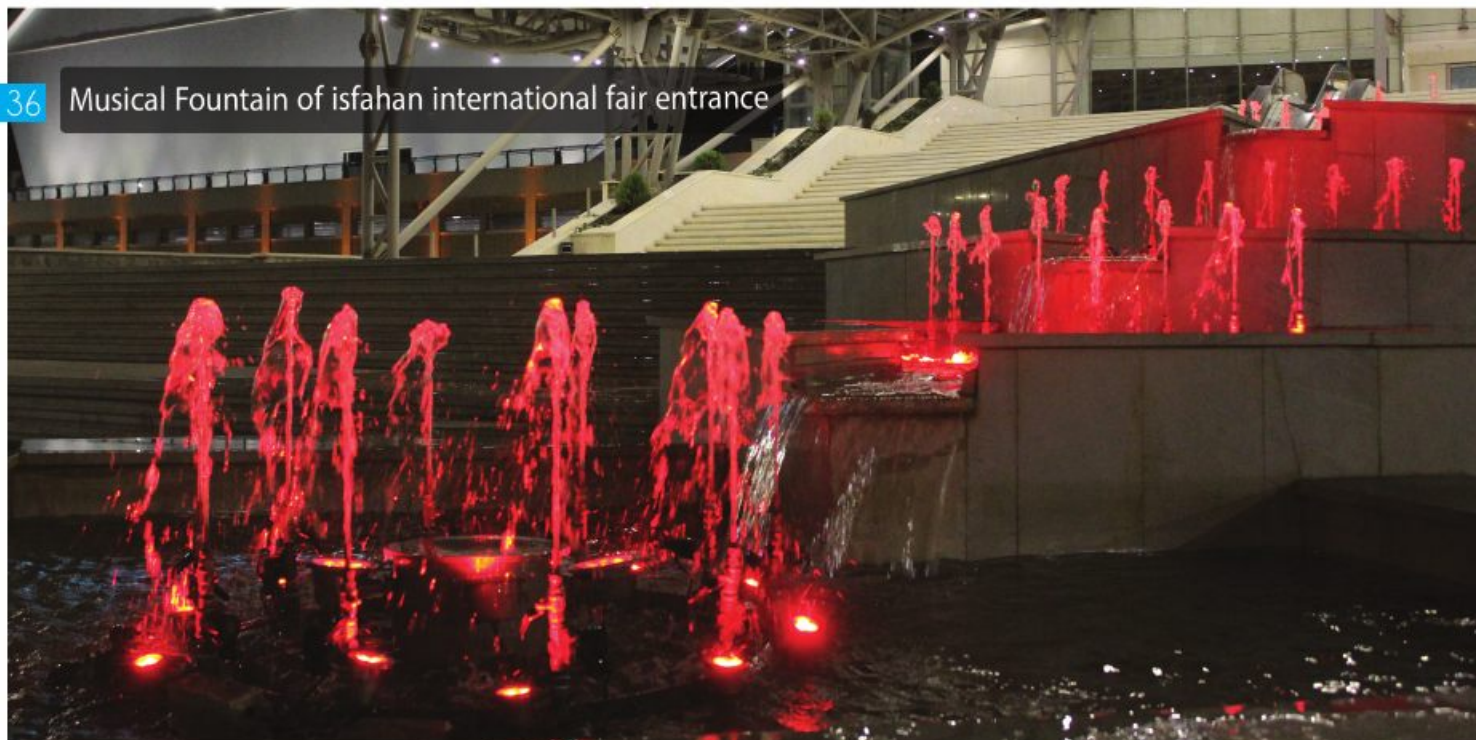
Negin restaurant dry deck fountain is consisted of 16 foam nozzles, 2 centrifugal pumps and AC drivers. Controll electric cabinets system of this fountain is designed to control lights and height of fountain. This fountain has a smart filtration system and tank water level controller. This fountain has been Designed and executed during three monthes in Complex.



#### Bonyad Musical Dry fountain

In this project, Musical Dry fountain is constructed with 18 stainless steel dry deck nozzle, 3 submersible pump, 3 AC drive and 2 LED RGB light channel and DMX 512 controller. This fountain is designed and constructed within 2 months by Abara fountain company.



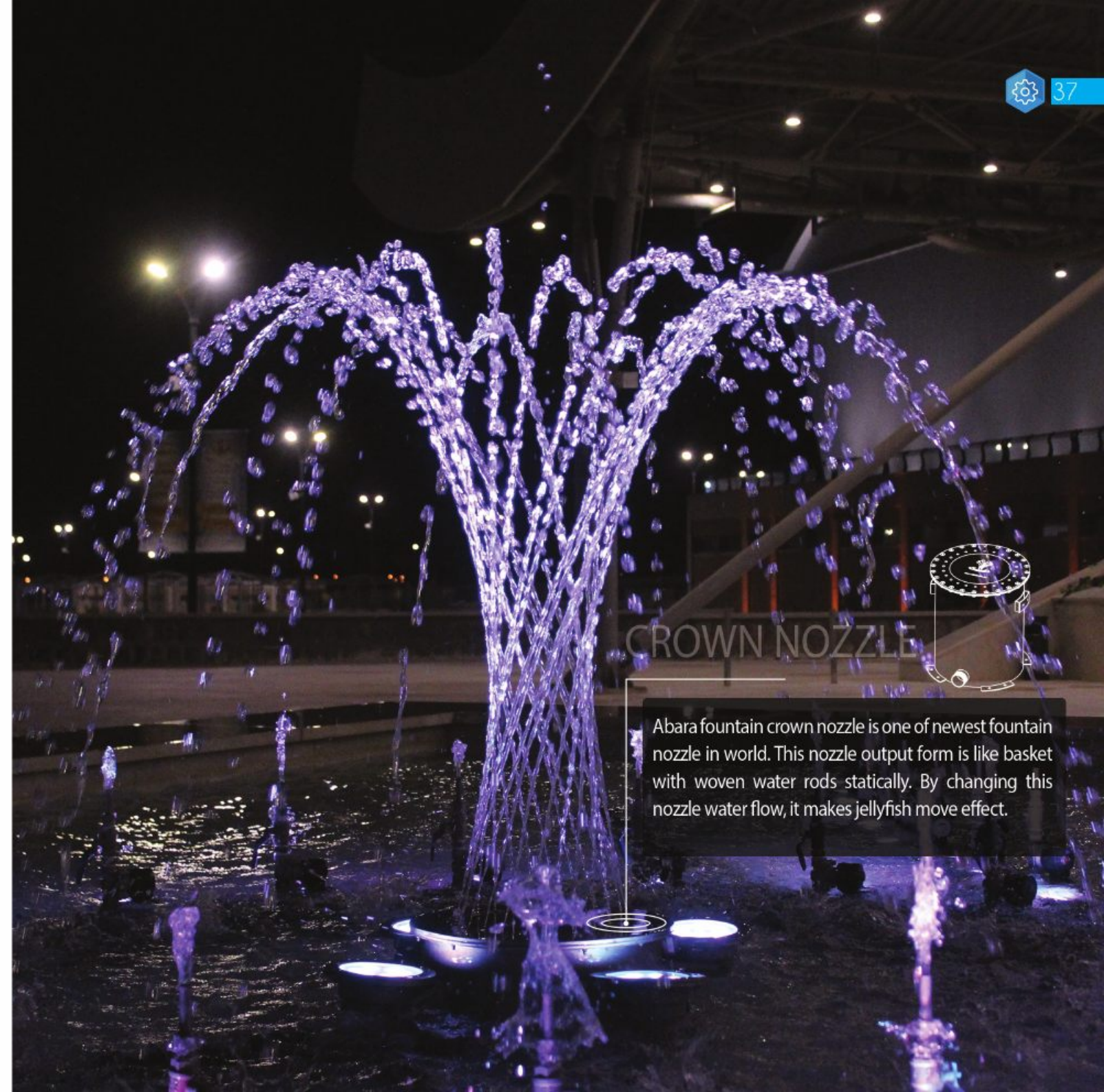


36 Musical Fountain of isfahan international fair entrance



4m Height  
Comet nozzle

6m Height  
Crown nozzle



### CROWN NOZZLE



Abara fountain crown nozzle is one of newest fountain nozzle in world. This nozzle output form is like basket with woven water rods statically. By changing this nozzle water flow, it makes jellyfish move effect.



Isfahan fair flag square dynamic fountain

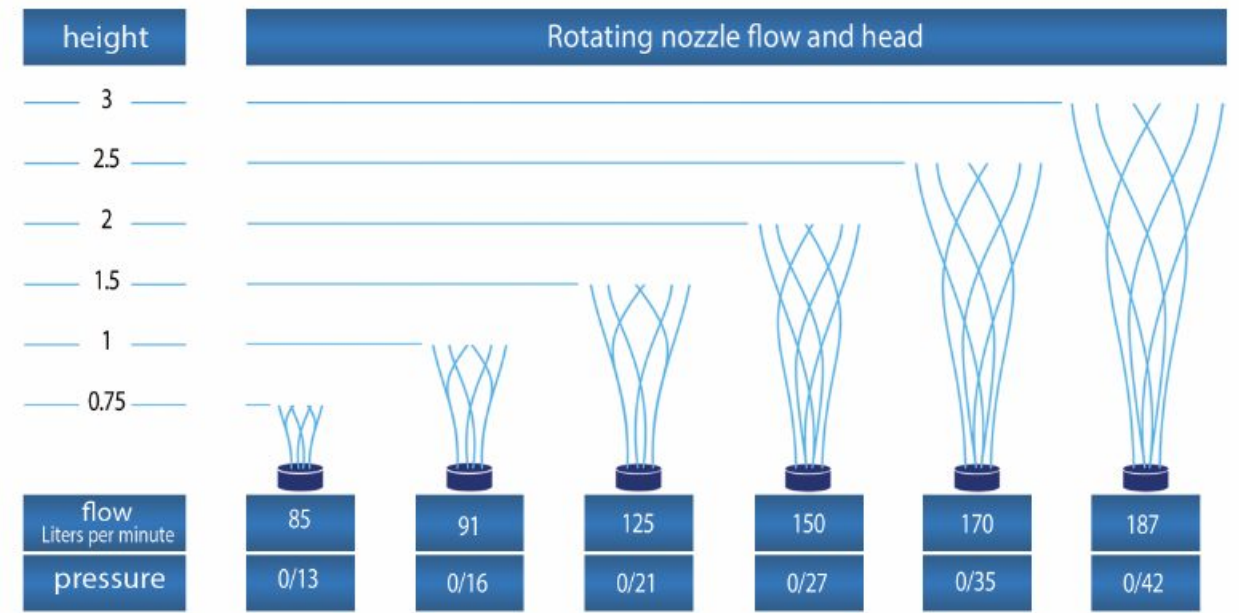
This fountain is dynamic fountain based on one of the most popular forms of classic fountains. Flag square fountain consists of 2 concentric ring of vertical comet nozzles which are driven by 2 centrifugal pumps and AC drives



Isfahan fair entrance square dynamic fountain



This fountain has 3 types of nozzle. cluster nozzle is placed at center of pool surrounding by comet nozzles ring and rotating nozzles. This fountain is driven by 3 centrifugal pumps and AC drives.





### Larestan international airport dry fountain

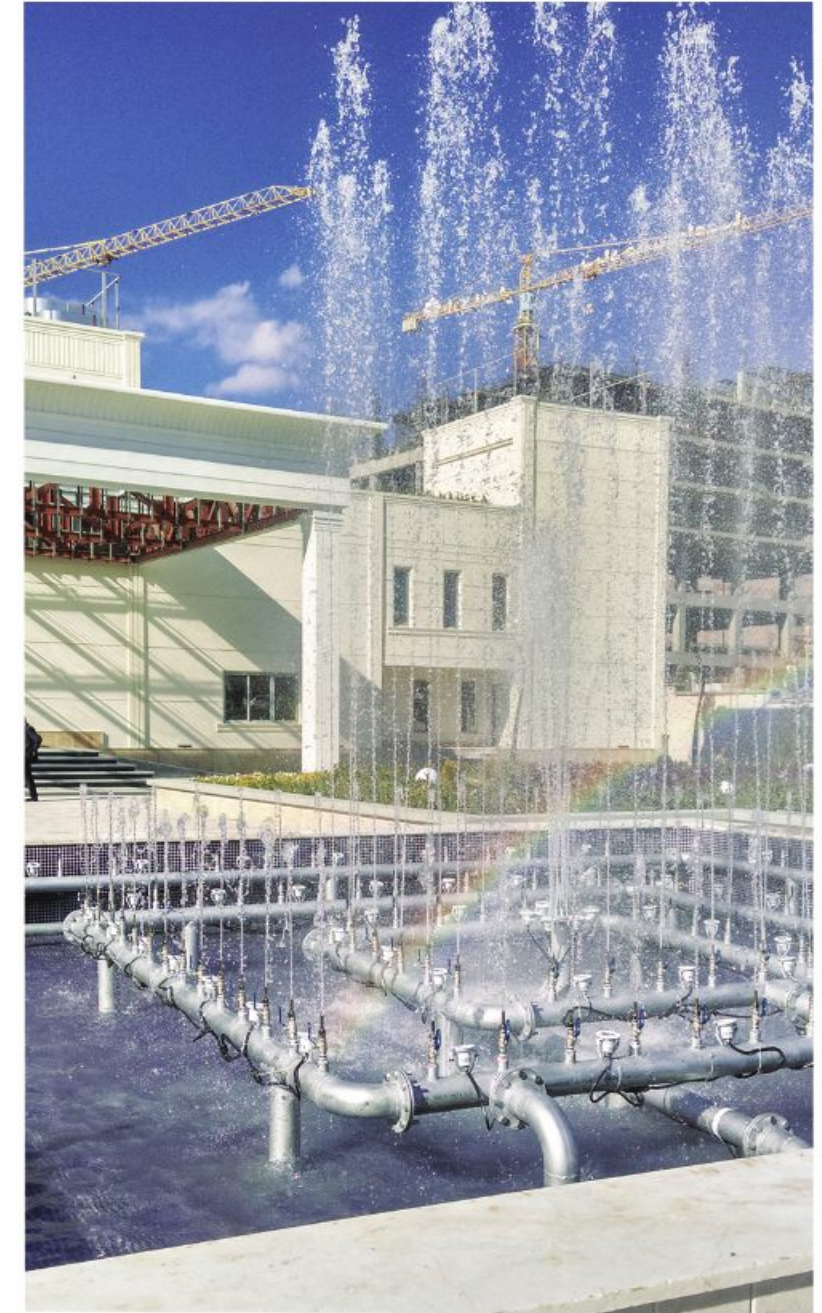
This dynamic dry fountain is constructed in larestan airport area and include 2 submersible pumps and AC drives. This fountain design is done according to the passenger ways and airport landscape. This fountain consists of 18 dry deck nozzles.



Kermanshah parsian hotel is one of the best 5 star hotel in west of iran. This dynamic fountain is designed according to the shape and design of ceremony hall yard that consist of 3 pipe rings and 1 cluster nozzle in center which are driven by 4 Ebara submersible pump.



### Kermanshah Parsian Hotel Dynamic Fountain





Sarv Complex Entrance Fountain



INDOOR FOUNTAIN

KFC Fastfood glass Waterwall 43





This Project is consisted of two frameless glass waterwall fountain with 3 meter height and 2.1 meter width, which is covered with gold stainless steel sheet.





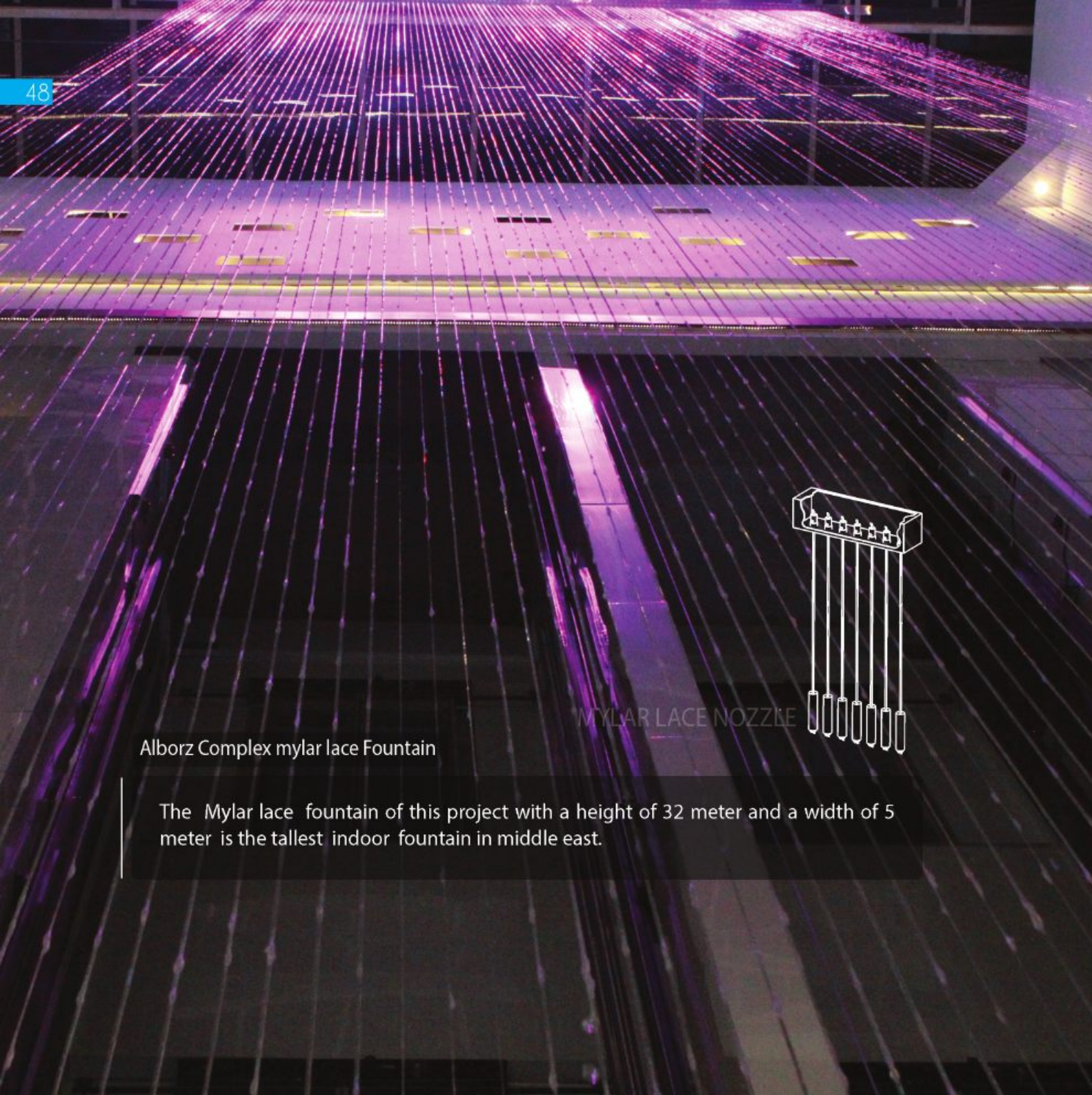


This fountain is designed and constructed in ground floor of mehromah commercial complex with purpose of making an interesting and relaxing environment. This project consists of 5 glass waterwalls with 4m height and 1.6m width. This fountain have automatic tank water filling, central ozon generator for disinfection, internal tank filtration system and electromagnetic anti sediment system on pipelines.



Mehromah Complex Waterwall Fountain





Alborz Complex mylar lace Fountain

The Mylar lace fountain of this project with a height of 32 meter and a width of 5 meter is the tallest indoor fountain in middle east.



MYLAR LACE NOZZLE



Alborz Complex Fountain



FOAM NOZZLE

Alborz comercial complex fountain consists of a mylar lace fountain and musiactal founatin. Musiactal fountain part have 20 foam nozzels, 16 comet nozzels with solenoiad valves, 3 crown nozzels and 7 lower submersible pumps. This fountain is controlled with abara DMX fountain.





## RAIL MOUNT DMX RECIEVER

This product series is new generation of DMX512 recievers with ability of DIN rail mount in electrical cabinets. This product serie have 2 different reciever. 4 channel solenoid valve controller and RGBW LED light controller have designed and producted to cover musical fountain needs.



Isolated Output



DMX



Nano cotation



Isolated power supply line



## BUBBLE WALL

Bubble Wall is one of the most modern elements utilized in interior decoration. Small bubbles motion through bubble wall multi panel creates exquisite view.



Low thickness



Combine ability



Automatic water charging



Custome engravment



